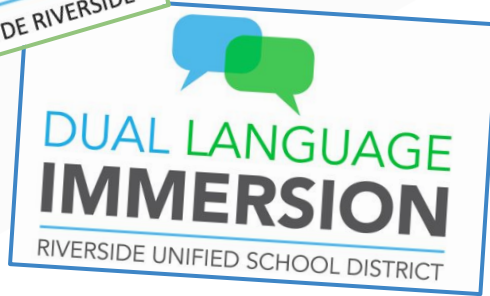


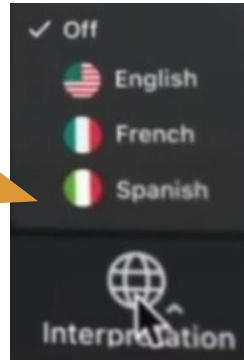
# DLI Recruitment Parent Information





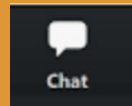
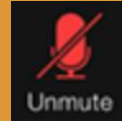
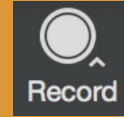
## Bienvenidos, empezaremos en breve.

Para español, haga clic en el icono de interpretación y seleccione “Spanish”



# Meeting Essentials

- This meeting will be recorded
- Please keep your mic on mute
- Unmute your mic when you need to speak
- Use the Chat box for questions or comments



**RUSD**

RIVERSIDE UNIFIED  
SCHOOL DISTRICT



# Opportunity to become bilingual and biliterate

A student who is **bilingual** can **fluently** speak two languages. A student who is **biliterate** can **read and write** proficiently in two languages.



# Benefits of Dual Language Immersion

- Bilingualism provides lasting cognitive, academic, linguistic, and economic benefits.
- Students with multi-cultural experiences will be more prepared to live and function in a global community.
- Dominant Spanish speakers will have the opportunity to develop literacy in their first language, and maintain that first language while becoming fluent in English.
- Dominant English speakers will have the opportunity to become fluent in Spanish.



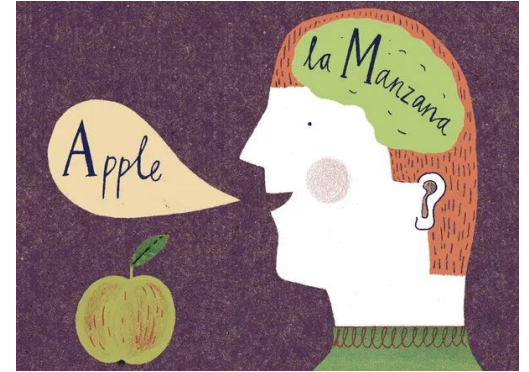
**ENGAGING.**  
**EXPANDING.**  
**EMPOWERING.**

## Dual Language Immersion Program

**KINDERGARTEN** *students are immersed in the target language - SPANISH*

**RIGOROUS** and **CHALLENGING**

It is **REWARDING** when your kindergarten child can speak Spanish & English by the end of the year



# Program Pillars

Our program begins in kindergarten, continues through 6<sup>th</sup> grade and into middle and high school. Students learn about the pillars.

## Pillar #1

Our program is designed to build **bilingualism** and **biliteracy** in English and in Spanish for all students.



## Pillar #2

We strive to provide **high levels** of standards-based **academic experience.**



## Pillar #3

Students develop **cross-cultural awareness**; therefore, they are able to work with others with a **global** mindset.



## Model

90/10

RUSD DLI program model.

## Design

50/50

Our program is designed to have an **equal** number of English speaking and Spanish speaking students in the classrooms.



**RUSD**

RIVERSIDE UNIFIED  
SCHOOL DISTRICT





# Program Design

ENGAGING.  
EXPANDING.  
EMPOWERING.

4 + 1

4 Language Domains + 1  
Listening, Speaking, Reading, Writing +  
Multilinguistic Awareness

Math, Science,  
History-Social  
Studies, etc.

**Language learning** takes place through **content instruction** that is standards-based, rigorous, highly engaging, and collaborative.



Academic subjects are taught in both languages, though **not concurrently**.



Teachers are **fully** bilingual and biliterate.

## Amazing Opportunities for Students:

- Be **bilingual** & **biliterate** in two languages!
- Opportunity to earn college credit in high school
- Opportunity to earn the CA Seal of Biliteracy
- Graduate with a Translator Certificate



# Our DLI Pathways



# Program Model

Grade	Spanish	English	Literacy Development
Kinder	90%	10%	Spanish
1 <sup>st</sup>	80%	20%	Spanish
2 <sup>nd</sup>	70%	30%	Spanish
3 <sup>rd</sup>	60%	40%	Introduction of formal English
4 <sup>th</sup> -6 <sup>th</sup>	50%	50%	English and Spanish



# Program Model

Grade	Spanish	English	Literacy Development
7 <sup>th</sup> Grade	<ul style="list-style-type: none"><li>• 7<sup>th</sup> Grade History</li><li>• Pre-AP Spanish</li></ul>	All other subjects	Spanish and English
8 <sup>th</sup> Grade	<ul style="list-style-type: none"><li>• 8<sup>th</sup> Grade Science</li><li>• AP Spanish*</li></ul>	All other subjects	Spanish and English
9 <sup>th</sup> -12 <sup>th</sup> Grades	<ul style="list-style-type: none"><li>• At least one subject in Spanish at each grade level</li></ul>	All other subjects	Spanish and English



# DLI Program in 2023-2024

School	Grades
Washington	Kinder - 6 <sup>th</sup> Grade
Castle View	Kinder - 6 <sup>th</sup> Grade
Mt. View	Kinder - 6 <sup>th</sup> Grade
Jefferson	Kinder - 6 <sup>th</sup> Grade
Longfellow	Kinder - 6 <sup>th</sup> Grade
Fremont	Kinder - 6 <sup>th</sup> Grade
Gage Middle School	Grade 7 <sup>th</sup> and 8 <sup>th</sup>
Sierra Middle School	Grade 7 <sup>th</sup> and 8 <sup>th</sup>
University Heights	Grade 7 <sup>th</sup>
Poly High School	Grades 9 <sup>th</sup> - 12 <sup>th</sup>
Ramona High School	Grade 9 <sup>th</sup> and 10 <sup>th</sup>



# 2023-2024 University Heights Opens 7th Grade



**Apply at**  
**[riversideunified.org/DLI](https://riversideunified.org/DLI)**

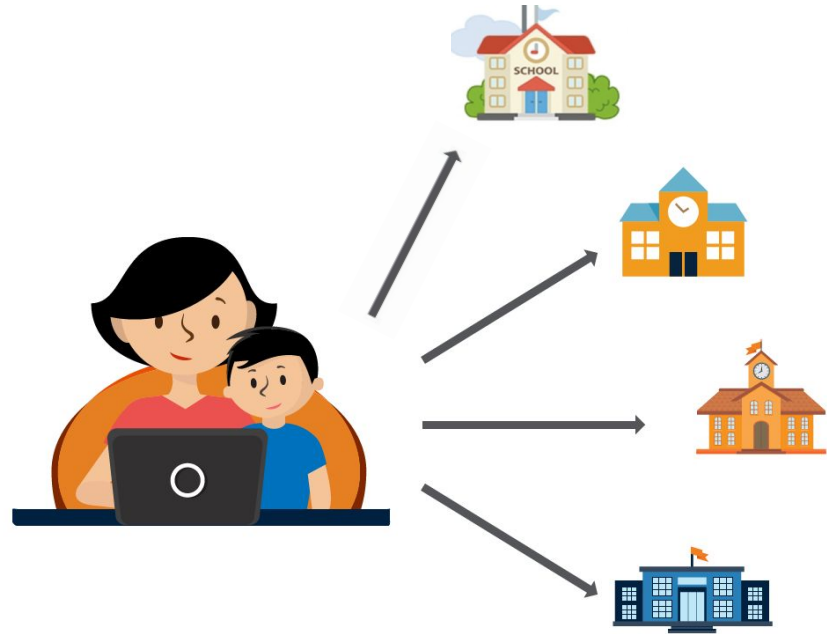




When you apply:

Select up to 4  
elementary schools  
on the application

To have more  
opportunities to  
enter our program



## CAUTION: *Only request a school if:*

- You are comfortable having your child on the K- 6, 7-8, 9-12 pathway
- You can provide transportation to the school you select **without hardship**
- The school is a viable option for your family





- If you already have a child in DLI, you **must** apply in November 2023 for new students
- Siblings are not automatically accepted



# Priority

ENGAGING.  
EXPANDING.  
EMPOWERING.

**1<sup>st</sup> :** **School of Residence students** and *within this category, School of Residence students with **siblings** already in the program will be placed first.*

**2<sup>nd</sup> :** **Non- school of residence** students who have a sibling already in the program *at that site*

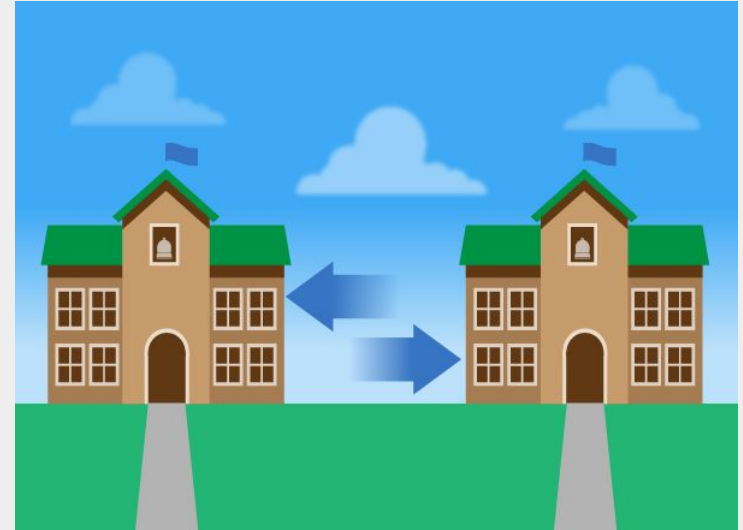
**3<sup>rd</sup> :** Parent works *at that specific DLI site*

**4<sup>th</sup> :** *All other students*

**Lottery** is implemented when we have more applicants than spaces available.

# Requests for Transfer

- Both **in-district** and **out-of-district** parents may apply to the program.
- **Out of district** parents must attain a transfer release from their district of residence
- **Out of district** parents must complete a District of Choice Transfer Application, which will be available on the RUSD website from November 1, 2023 through January 12, 2024.
- If you are not accepted into the DLI program, but you want your child attending a particular school, complete the district transfer application.



# Request for Transfer

- Parents requesting movement from one DLI school to another must complete an **Intra-district Transfer Application** during the regular application window from November 1, 2023 through January 12, 2024.
- Attrition in the program is low, very few spots open up each year
- Placement at grades above Kindergarten still recognizes the priority levels of 1) School of residence, 2) Sibling, and 3) DLI-Site Employee



# Ending a DLI Transfer

- Specialty transfers are granted for DLI parents based on enrollment in DLI
- **If the parent decides to leave DLI, the transfer is revoked**
- The student must return to their school of residence when the **Specialty Transfer** is revoked



# Dual Language Immersion Application Dates

## Fall Application 2024 Window

- Opens: November 1, 2023 at 12:00 pm
- Closes: December 15, 2023 at 4:00 pm

## After Application Window

- Opens: January 29, 2024 at 12:00 pm
- Closes: August 16, 2024 at 4:00 pm



A link to the online application will open November 1, 2023.



# When will you get information?

## Fall Application 2024 Notices

Notification about the status of the application will be sent to parents at the end of January 2024



# Additional Information and Support

For information, please visit the Dual Language Immersion webpage at:  
<http://www.riversideunified.org/DLI>

Information on the website:

- Handy links to each of the DLI sites
- The DLI Handbook, a thorough guide to the DLI program
- Information on the Application Process
- **A link to the online application, to be posted Nov. 1**
- A Frequently Asked Questions document
- Research and other articles on Dual Language Immersion



**Apply at**  
**[riversideunified.org/DLI](https://riversideunified.org/DLI)**



# Questions



---

# Thank you

Esther Garcia, Coordinator, DLI K-12

[emgarcia@riversideunified.org](mailto:emgarcia@riversideunified.org)

Samantha Flores, Administrative Secretary 1, DLI K-12

[seflores@riversideunified.org](mailto:seflores@riversideunified.org)

Patricia Thetford, TOSA, DLI K-12

[pthetford@riversideunified.org](mailto:pthetford@riversideunified.org)

