

Riverside Unified School District

At-A-Glance



2023-2024





OUR DISTRICT

With schools dating back to the 1870s, the award-winning **Riverside Unified School District (RUSD)** is the 16th largest school district in California. RUSD educates nearly 40,000 students across 50 schools in Riverside. The district serves a large portion of Riverside as well as the unincorporated areas of Highgrove and Woodcrest. RUSD is led by Ms. Renee Hill, the 12th Superintendent, and is governed by a Board of Education comprised of publicly elected officials who serve in five different trustee areas.



29 Elementary Schools | **7** Middle Schools | **5** High Schools
8 Specialty Schools | **21** Preschool Programs



DEAR RUSD COMMUNITY,

Team RUSD is committed to providing high-quality instruction to our students, using our CARE model: seeing that everyone is cared for and cared about while improving academic achievement, reducing service gaps, and reaching for excellence every time.

Together with the Board of Education, we strive to provide engaging, innovative, and equitable learning experiences for all students.

I invite you to look through this report and learn about the programs, projects, and initiatives that make RUSD shine.

With gratitude,

Renee Hill

Ms. Renee Hill
Superintendent





RUSD BOARD OF EDUCATION



Dr. Noemi Alexander Hernandez

TRUSTEE AREA 1



Mr. Dale Kinnear

TRUSTEE AREA 2



Dr. Angelo Farooq

TRUSTEE AREA 3



Mr. Tom Hunt

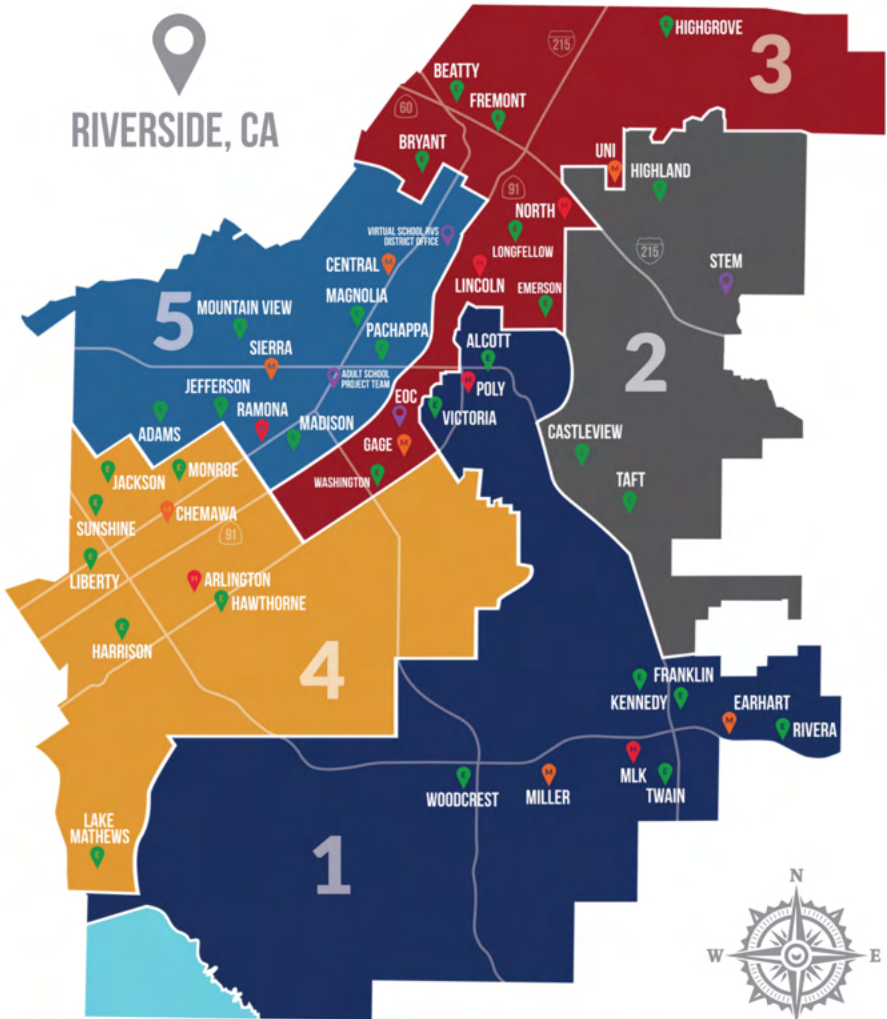
TRUSTEE AREA 4



Mr. Brent Lee

TRUSTEE AREA 5

TRUSTEE AREA MAP & SCHOOL SITES



-  **E** ELEMENTARY SCHOOL
-  **H** HIGH SCHOOL
-  **M** MIDDLE SCHOOL
-  **SPECIALTY SITE**

WHO WE ARE

MISSION

Riverside Unified School District provides **engaging**,
innovative, and **equitable** learning experiences
for all students.

VALUES

| | |
|------------|------------|
| Community | Excellence |
| Equity | Innovation |
| Engagement | Well-being |

EQUITY TENETS

Eliminate disparities
and inequitable
practices

Implement inclusive
practices and
policies

Honor individuality
with a focus on high
outcomes for all

Guarantee respectful
treatment where all
individuals feel valued

RUSD HIGHLIGHTS



16TH
LARGEST DISTRICT
IN CALIFORNIA

4 CALIFORNIA
GOLD RIBBON
SCHOOLS

1 SCHOOLS
TO WATCH
DESIGNATION

1 CORE KNOWLEDGE
SCHOOL
OF DISTINCTION



10 DUAL
LANGUAGE
SCHOOLS



4 AVID
DEMONSTRATION
SCHOOLS



8
GOLDEN BELL
AWARDS

Since 2000



30
DISTINGUISHED
SCHOOLS



5
BLUE RIBBON
SCHOOLS





MTSS

(Multi Tiered Systems of Support)

RUSD commits to providing every student with an engaging, innovative, and equitable learning experience.

Multi-tiered Systems of Support (MTSS) is our fluid, student-centered approach grounded in data-based decision making to provide the intentional academic, behavioral, and social-emotional support students require to **THRIVE**.

RUSD's MTSS framework encompasses the whole child in the areas of academics, social-emotional and behavioral support. It is designed to:

- Prepare students to become college, career, and world-ready
- Provide targeted support for students based on need
- Align teaching practices to district values

By June 2024, all school sites will have implemented their data-informed Positive Behavior System and have a well-developed system for collecting and analyzing behavior data on a regular basis.



SPECIALTY PROGRAMS AND SCHOOLS

- *Dual Language Immersion, (951) 788-7135, ext: 80721
- *STEM Academy, (951) 788-7308, Serving grades 5-12
- *Core Knowledge (Adams, Bryant, Franklin), (951) 788-7135
- *International Baccalaureate at John W. North HS, (951) 788-7311, ext: 63083
- *Creative & Performing Arts Magnet Program at Ramona HS (951) 352-8429, ext: 65101
- Raincross Alternative Education Program, (951) 276-7670
- Riverside Virtual School, (951) 778-5300
- Summit View Home Based Program, (951) 276-7670
- Lincoln High School, Continuation High School, (951) 276-7670
- Career Technical Education (see page 14)

**Enrollment opens every November 1*

Learn more at riversideunified.org/specialtyprograms

INSTRUCTIONAL SERVICES

Learn about our Common Core Standards and the resources available for students and families at riversideunified.org/instructionalservices

WHO WE SERVE

Hispanic **68.1%** | White **17%** | African American **6%** | Asian **3.7%** |
Filipino **1.2%** | Pacific Islander **0.3%** | Two or more races **2.0%** |
Not reported **1.4%** | American Indian or Alaska Native **0.3%**

Source: California Department of Education - Data Quest
22-23 Enrollment by Ethnicity

OUR INVESTMENT



On November 8, 2016, the voters of the Riverside Unified School District approved the Measure O General Obligation Bonds with a 70% approval rate. Measure O will generate \$392 million dollars over the next 10 to 15 years to improve and build new capital facilities in the Riverside Unified School District.

The bonds are used to repair and upgrade District aging school infrastructure, classrooms and buildings, build new schools, modernize school facilities with 21st century technology, improve access for students with disabilities, provide classroom and labs for career and technical education classes, improve school safety by modernizing security systems, retrofitting buildings to be earthquake proof, and upgrading emergency communications.

Since the passage of Measure O, fourteen schools have been completed, four schools are currently under construction, and three schools are in the planning stages.

Thank you to our community for investing in our students and voting to pass Measure O.

Learn more at riversideunified.org/measureO

Scan the QR code to view completed and in progress project images.







SCIENCE, TECHNOLOGY, ENGINEERING & MATHEMATICS (STEM)

STEM education is an integrated and interdisciplinary approach to authentic, project-based learning experiences and skill development.

Through learning experiences and coursework, students develop critical thinking and problem-solving skills, such as collaboration, adaptability, communication, and creativity.

Areas of study include but are not limited to:

- Biomedical Science
- Coding/Computer Science
- Engineering
- Environmental Science
- Robotics



Google for Education
Partner

Learn more at rusd.info/STEMfam





VISUAL AND PERFORMING ARTS

RUSD's Visual and Performing Arts Programs are an integral part of a student's education. From TK to 12th grade, students have opportunities to explore, create, connect with professional artists, and prepare for college and career opportunities in the arts.

Arts programs include:

- Choir
- Dance
- Instrumental Music
- Media Art
- Theater and Technical Theater
- Visual Arts

Learn more at riversideunified.org/vapa





CAREER TECHNICAL EDUCATION (CTE)

CTE provides all students opportunities to discover their talents, interests, passions, and strengths. We offer **45** CTE pathways in **26** industry programs.

CENTRAL MIDDLE SCHOOL

Applied Computer Sciences
Applied Digital Media

CHEMAWA MIDDLE SCHOOL

Applied Digital Media
Biomedical Sciences

EARHART MIDDLE SCHOOL

Graphic Design and Print Production
Engineering Design
Robotics & Engineering Systems

GAGE MIDDLE SCHOOL

Applied Digital Media
Residential & Commercial Construction
Technical Theater & Live Event Production

MILLER MIDDLE SCHOOL

Biomedical Sciences
Public Services

SIERRA MIDDLE SCHOOL

Health Careers & Patient Care
Robotics & Engineering Systems

UNIVERSITY HEIGHTS MIDDLE SCHOOL

Applied Computer Sciences
International Business

EDUCATIONAL OPTIONS CENTER (EOC)

Health Careers & Patient Care

LINCOLN HIGH SCHOOL

Automotive Technology
Health Careers & Patient Care

ARLINGTON HIGH SCHOOL

Applied Digital Media/MAA
Biomedical Sciences/PLTW
Game Design & Development
Health Careers & Patient Care
Networking & Cybersecurity

MARTIN LUTHER KING JR. HIGH SCHOOL

Architectural Design/PLTW
Engineering Design/PLTW
Film, TV, & Video Production
Graphic Design and Print Production
International Business
Robotics & Engineering Systems/PLTW
Sales & Marketing
Sports Medicine & Injury Management
Technical Theater & Live Event Production

J.W. NORTH HIGH SCHOOL

Education & Child Development/EHSA
International Business/GBIT
Law & Public Services/LAPS
Modern Environmental Sustainability Solutions
Sports Medicine & Injury Management



CAREER TECHNICAL EDUCATION (CTE)

POLY HIGH SCHOOL

Applied Digital Media
Culinary Arts & Services
Dance & Movement Applications
Film, TV, & Video Production
Music Technology & Audio Production
Professional Photography
Sports Medicine & Injury Management
Technical Theater & Live Event Production
Web & App Development

STEM HIGH SCHOOL

Engineering Designs

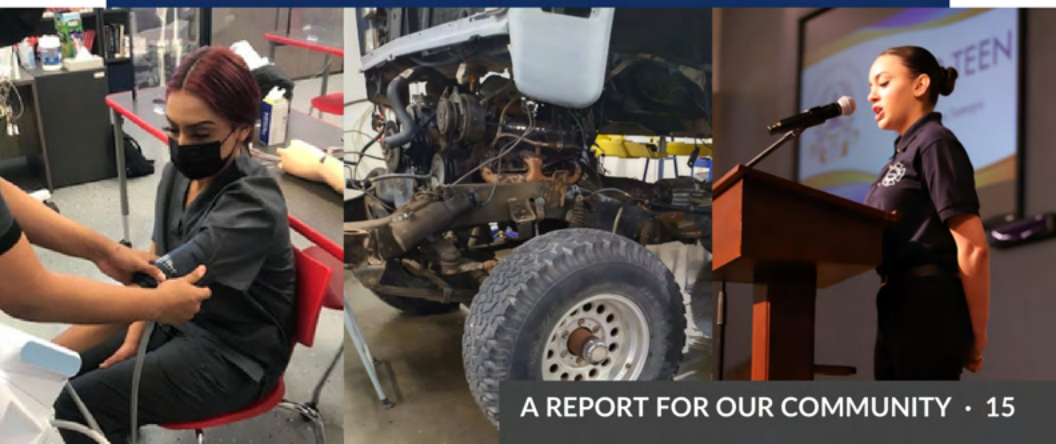
RAMONA HIGH SCHOOL

Culinary Arts & Services
Film, TV, & Video Production
Health Careers & Patient Care
Professional Photography
Residential & Commercial Construction

RIVERSIDE VIRTUAL SCHOOL

Game Design & Development
International Business
Professional Photography

Learn more at bit.ly/careerreadyperiod





WELL-BEING

RUSD focuses on the well-being of all students, employees, and families. Programs and services throughout our schools and district focus on wellness and engagement for all by providing the resources below:

- Family Resource Center (FRC)
- Positive Behavior Practices
- Restorative Practices
- School Counselors & Psychologists
- Site and District Crisis Teams
- Staff Wellness
- Strengths Academy
- Student Assistance Program
- Suicide Prevention & Intervention
- Wellness Initiatives

To report suspicious activity, call (844) 951-2990 or submit a tip at **bit.ly/RUSDWETIP**





COLLEGE & CAREER READINESS

Students in grades 9-12 have the opportunity to complete dual enrollment college courses while in high school through the College & Career Access Pathway (CCAP) program in partnership with Riverside City College (RCC).

The CCAP program allows students to earn up to a year of college credit before graduating high school. **College credit is earned without leaving high school and is FREE.** Most courses meet the A-G admissions requirements and are transferable to the University of California (UC) and Cal State University (CSU) systems.

We offer:

- A transfer pathway consisting of eight college courses at six high schools that allows students to complete the equivalent of one year of transferable coursework.
- A Nursing fast-track pathway with Riverside City College at Ramona and Arlington High Schools.

Learn more at bit.ly/RUSD-CCR



PROFESSIONAL GROWTH SYSTEMS

Through a culture of lifelong learning, our RUSD Professional Growth Systems (PGS) provide support in the following areas:

Teacher Professional Growth System supports teachers new to the profession, interns, induction candidates, experienced teachers new to RUSD, and experienced teachers who request support.

Administrator Professional Growth System supports new to the position and new to RUSD site principals, co-administrators, and site principals who have changed their level of leadership.

Classified Professional Growth System launched in 2023-2024. Newly hired classified bargaining unit members are assigned a mentor for ongoing support and direction for areas of growth. The focus is to build capacity, increase retention and job satisfaction through professional development and coaching.

PGS is a collaboration between Riverside Unified School District, California School Employees Association, and Riverside City Teachers' Association.

Learn more at riversideunified.org/pgs



PERSONNEL

The RUSD Personnel department oversees the recruitment, hiring, retention and onboarding for over 5,600 employees. In addition, they oversee the applications and clearance for over 2,200 district volunteers.

RUSD Personnel support the growth of all employees and work with the California School Employees Association (CSEA), the Riverside City Teachers Association (RCTA) and the Riverside Association of School Managers (RASM), to provide a healthy and supportive workplace.

The department offers unique opportunities through partnerships and collaboration with local universities, grants, and programs such as California Classified to Classroom Pipeline to Teaching and Classified to Certificated Teacher Program.

Discover the opportunities and apply to join Team RUSD at bit.ly/RUSDJobs



2023-24 ADOPTED BUDGET

The District's General Fund is the primary source of funding for our TK-12 district operations, services, and employee salaries and benefits.

Our 2023-24 General Fund adopted budget includes revenue of \$543.6M from the Local Control Funding Formula (LCFF); \$67.7M in federal revenues; \$112.9M in other state revenues and \$15.9M in local revenues for a total of \$740.1M.

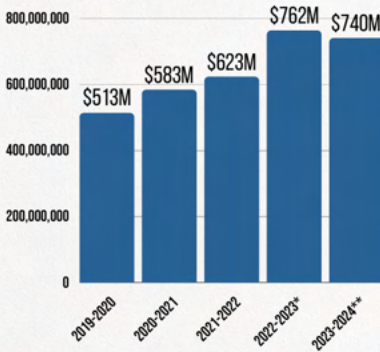
The District also has other dedicated funds including:

- Adult Education
- Building/Measure O
- Capital Facilities
- Child Development Fund
- Child Nutrition
- Self-Insurance

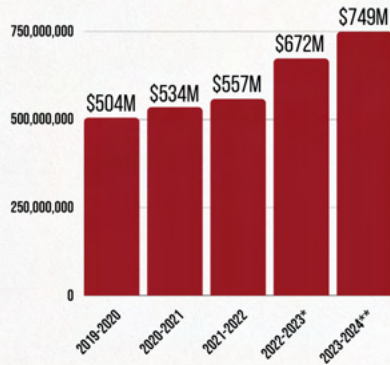


KEY BUDGET HIGHLIGHTS

REVENUES



EXPENDITURES



*Estimated Actuals **Budget

STAFFING

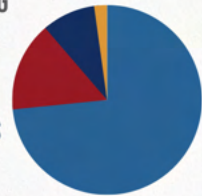
FULL TIME EQUIVALENCY (FTE)

- 1,707** Classroom Teachers
- 507** Other Certificated Staff
- 1,594** Classified Staff

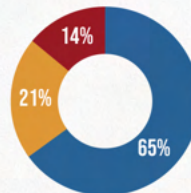
FUNDING SOURCES

73.4% OF RUSD FUNDING COMES FROM LCFF FUNDING

- **TOTAL LCFF FUNDS**
- **ALL OTHER STATE FUNDS**
- **ALL FEDERAL FUNDS**
- **ALL LOCAL FUNDS**



86.3% OF OUR EXPENDITURES ARE SPENT DIRECTLY ON STUDENT AND CLASSROOM SUPPORT



Classroom and Student Support
Direct to Student
Other Supports

LOCAL CONTROL & ACCOUNTABILITY PLAN (LCAP)

With 65 actions and a budget of \$144,018,385 for the 2023-24 school year, the LCAP is aligned with the state priorities and places responsibility on the district to proactively respond to the needs of our students and families.

Our Board approved goals are:

GOAL
1 *Engage students in high quality learning by a diverse, highly qualified staff.*

GOAL
2 *Provide students choices that prepare them for college and career pathways.*

GOAL
3 *Involve the whole family and community in student learning and well-being.*

Learn more at riversideunified.org/LCAP





RUSD FOUNDATION

RIVERSIDE UNIFIED SCHOOL DISTRICT

The Riverside Unified School District Foundation collaborates with students, donors, volunteers, and nonprofit organizations to enhance student learning experiences and ensure academic, artistic and curricular success. In addition, the RUSD Foundation works with parents, neighbors, teachers, family and district administration to discover student needs.

The RUSD Foundation is composed of seven community board members who champion student success.

Learn how you can support students transition from RUSD to college and career opportunities at **riversideunified.org/foundation**

RUSD Foundation is an exempt organization as described in Section 501(c)(3) of the Internal Revenue Code; EIN 85-2507113.







Scan the QR code to view the most
up to date version of this booklet